

MINI STUMP GRINDER



AUSTRALIA'S PREMIER ATTACHMENT MANUFACTURER



Mini Stump Grinder

Disintegrates tree stumps into wood chip quickly with Carbide tipped teeth and fingertip controls

Features:

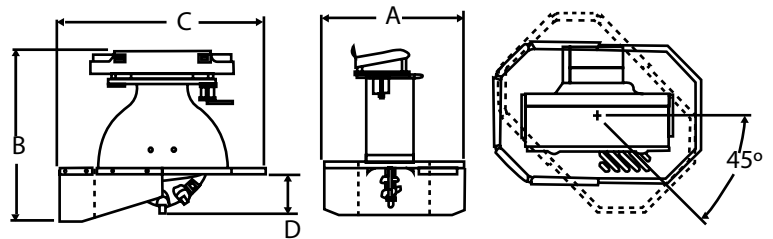
- Bearing mounted cutting wheel provides smooth, trouble free operation
- Adjustable wheel cutting angle allows optimal cutting for any type of stump
- Heavy Duty Rubber Guard.

Ideal Use:

Removal of Tree Stumps

Machine Suitability:

Micro Excavators, Mini Machines, Mini Loaders and small skid steers



Specification:	
A. Overall Width	626mm (24.67")
B. Overall Height	744mm (29.31")
C. Overall Length	904mm (35.60")
D. Below Ground Depth	169mm (6.69")
E. Angle	45
Number of Cutting teeth- Bolt on	24
Number of Cutting teeth- Square	14
Wheel Diameter	18.00"
Hydraulic Flow Requirement (LPM)	30 - 41 or 37 - 52
Weight (kgs) (with universal mount and square teeth)	147kgs



Stump Grinder also available

GET ATTACHED

with an experienced partner

DIGGA Head Office

Brisbane QLD
4 Octal Street,
Yatala QLD 4207
Ph: (07) 3807 3330
Fax: (07) 3807 1499

Email: info@digga.com Web: www.digga.com

DIGGA NSW

1 Gallipoli St, Smeaton
Grange, NSW, 2567
Ph: (02) 4647 1400
Fax: (02) 4647 1433

DIGGA VIC

21 - 25 Villas Road
Dandenong VIC, 3175
Ph: (03) 9706 6171
Fax: (03) 9706 6164

DIGGA WEST

13 Yampi Way,
Willetton, WA, 6155
Ph: (08) 9457 1544
Fax: (08) 9457 0748

